



October 2008

NEWSLETTER



www.peelseniors.net.

or contact us on

psn_mail@peelseniors.net

Christine Jackson President

Connie Fyfe Treasurer

Sarien De Beer Secretary

Home of Peel Seniornet

GENERAL MEETING Monday September 22nd. 2008

President Christine Jackson opened the meeting and welcomed all and special guests Mr. & Mrs Thomson from Caboolture (Seniors computer group) and welcome to new members also - Shirley Carton, Pat Thompson & Phyllis Clarke.



Secretary Sarien and President Christine

CLUB NEWS :

First of all just a reminder, the AGM is Monday 27th October. Nomination Forms are now available. This is the time to volunteer your services and keep our association growing in numbers and knowledge!

The procedure is that all members of committee stand down and nominations are taken at the AGM meeting for the new committee. Nomination forms are just that and the proxy forms are for someone else to vote in your place if you will be absent from the A.G.M.

Yearly membership fees are due now also.

The Social Functions

The committee have organized a morning tea on the 8th October, 10.00am at Ninos. In the New Year a volunteer member has come forward and will be taking over the Social functions. We will keep you posted!



Peel Senior Expo.

This takes place on Oct 31st – 1st Nov. The times are 9am- 3pm for each day and we are hiring a stall for display. The theme is ‘Seniors on the Go’. It’ll be a lot of fun and a social atmosphere too. There will be displays and exhibitions in the gardens around. A little different. TV’s Verity James will be our Host for the event but she will also mingle amongst the crowds! Lots of other entertainment as well.

There is an interesting invitation to hand, that gives members an opportunity to go to Fremantle on the 30th October to meet Nan Bosler the executive director of the A.S.C.C.A.

This is being organized by The Adult Learning Association, who have received a grant from Federal Department of Broadband, Communications and the Digital Economy. This is a national annual conference.

Members keen to attend please let Sarien know as she will be answering the invitation.

The time is 10.00 am to 2.00 pm and lunch will be provided free. The discussion will be the Internet and communications issues of concern to various club members.

They would love our support and any feedback.

Training :

These are on the 1st and 3rd Wednesdays of each month.

Tom Hoffman is now back on deck and with a lot of thought and assistance from Christine, is working on the new Computer Sessions which we will get out to you all by the end of November or early December. Plus they will be on our Website of course.

Over the last month or so due to the upgrading, the computer sessions have been rather improvised in fact the helpers have needed help !

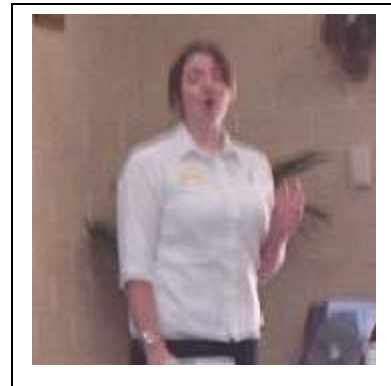
I must say though the new programs are very good and not as frightening as I first thought !

The speaker for 22nd October.

Rachel MacGeehan

This month Rachel MacGeehan returned from RAC to give us another presentation on motorized type wheelchair, gophers and scooters. We received guide lines when purchasing , such as size, weight, balance, strength, eyesight and general capability.

Rachel also gave us a clear idea of where to use motorized devices – gophers etc. This is mainly any where that is available for pedestrians, like footpaths, shopping centres and in public places.



Then we were told of the importance of having a clear idea of where to use motorized wheelchairs, gophers or scooters.

It is practical to use the right hand side , facing on coming traffic

There are rules and regulation, such as 10km/h, the minimum class and as a pedestrian, try to use a foot path and be aware of vehicles reversing out off driveways. Be considerate.

If no path is available , face traffic, be on right in fact. Watch for other vehicles signs and signals. and for road obstructions like potholes and parked cars opening doors.

Fit a flag to your gopher so you can easily be seen.

Prepare for travelling. Plan your journey, wear bright clothes and something reflective at night. Use a seat belt if fitted.

Travelling on buses. These are usually equipped to carry motorized wheelchairs.

Trains usually have platforms for access on your own. Either methods it's best to call PTA 1800 800 022 for advice.

Taxis are sometimes available too. The 'multi Purpose ' type. As are other forms such as ferries and some cars.

It's also wise to contact the Dept. of Planning and Infrastructure Licensing Dep. 131156 for further information. For example if your vehicle can go more than 10kl/h a license is required in order to operate it on a public highway .
Members demonstrated their appreciation and Rachel was presented with a Certificate of Appreciation for an excellent presentation.



**Rachel kindly drew the raffle for the day and
Maria Hutchinson was the winner !**

**Members are reminded that the Annual General Meeting is next month
Monday October 27th at 1.30pm in the main Hall
of the Senior Citizens Centre, Orsmy Terrace.**

Please show your support.



Cheers Christine

Hints and Tips.

Forgot to Use the BCC - (Blind Carbon Copy)

This works the best when you're e-mailing multiple people. If you insert the e-mail addresses onto the BCC line, the recipients won't be able to see any of the other e-mail addresses you're sending the e-mail to. Now, don't get this confused with the CC option either. BCC is really the way to go to keep everyone's addresses safe and secure.

Used the Reply All Button - Do you ever get confused as to whether you should hit the Reply or Reply All buttons when you're replying to an e-mail message? If you click on Reply All, your reply will go to each and every e-mail address that the original message was sent to. Yes, it will go to the person you intended as well, but if you're sending them a personal message, you don't want everyone else to be able to see it. Always use Reply first. It's a safer shot.

Here's a wonderful site that gives free computer tutorials for computer beginners - <http://www.homeandlearn.co.uk>